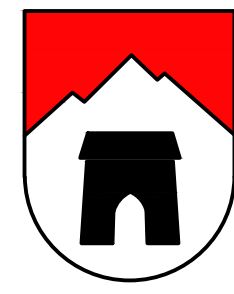


Gemeinde Lumnezia



Sanierung Via Puzzatsch - Parvalsauns

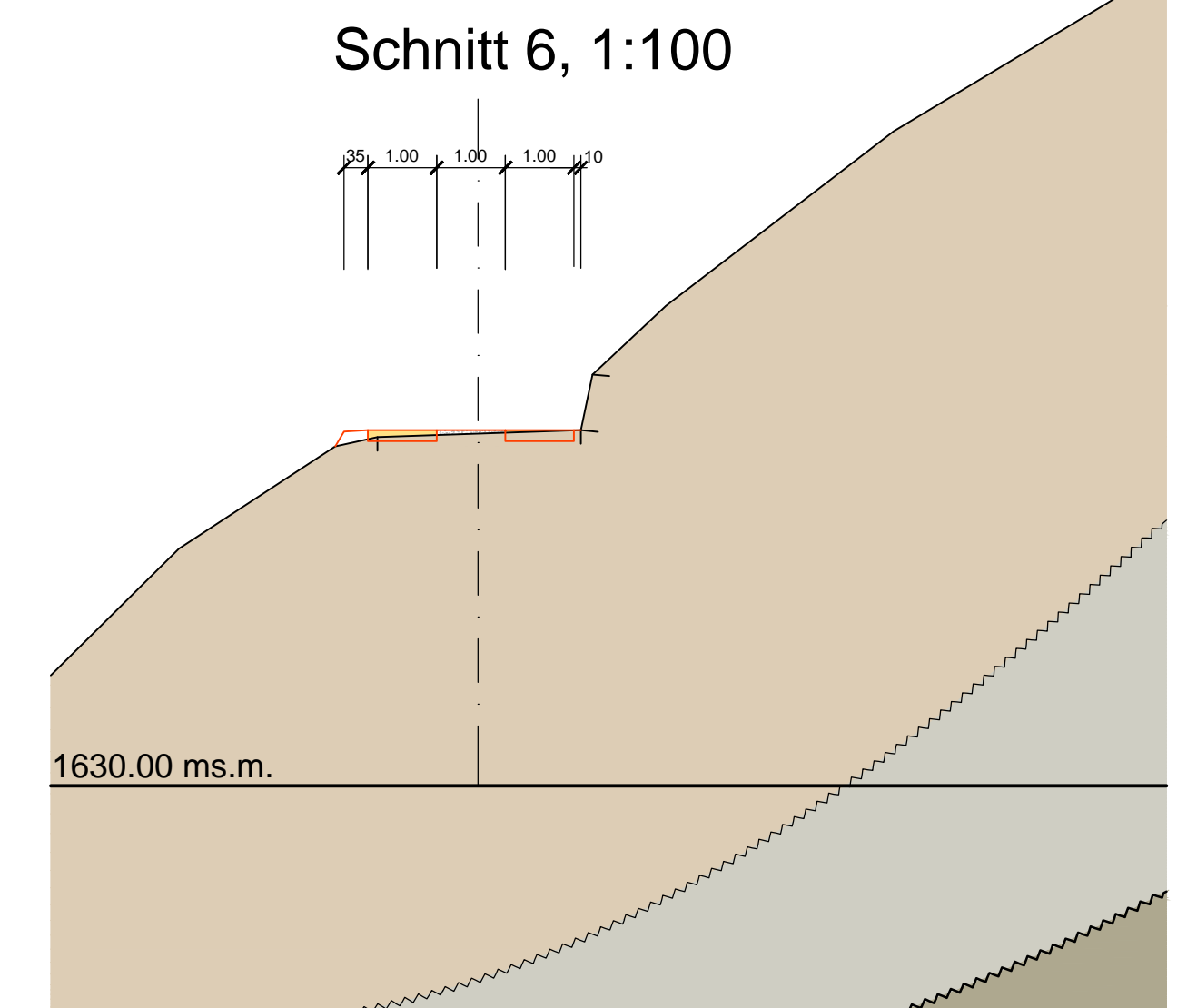
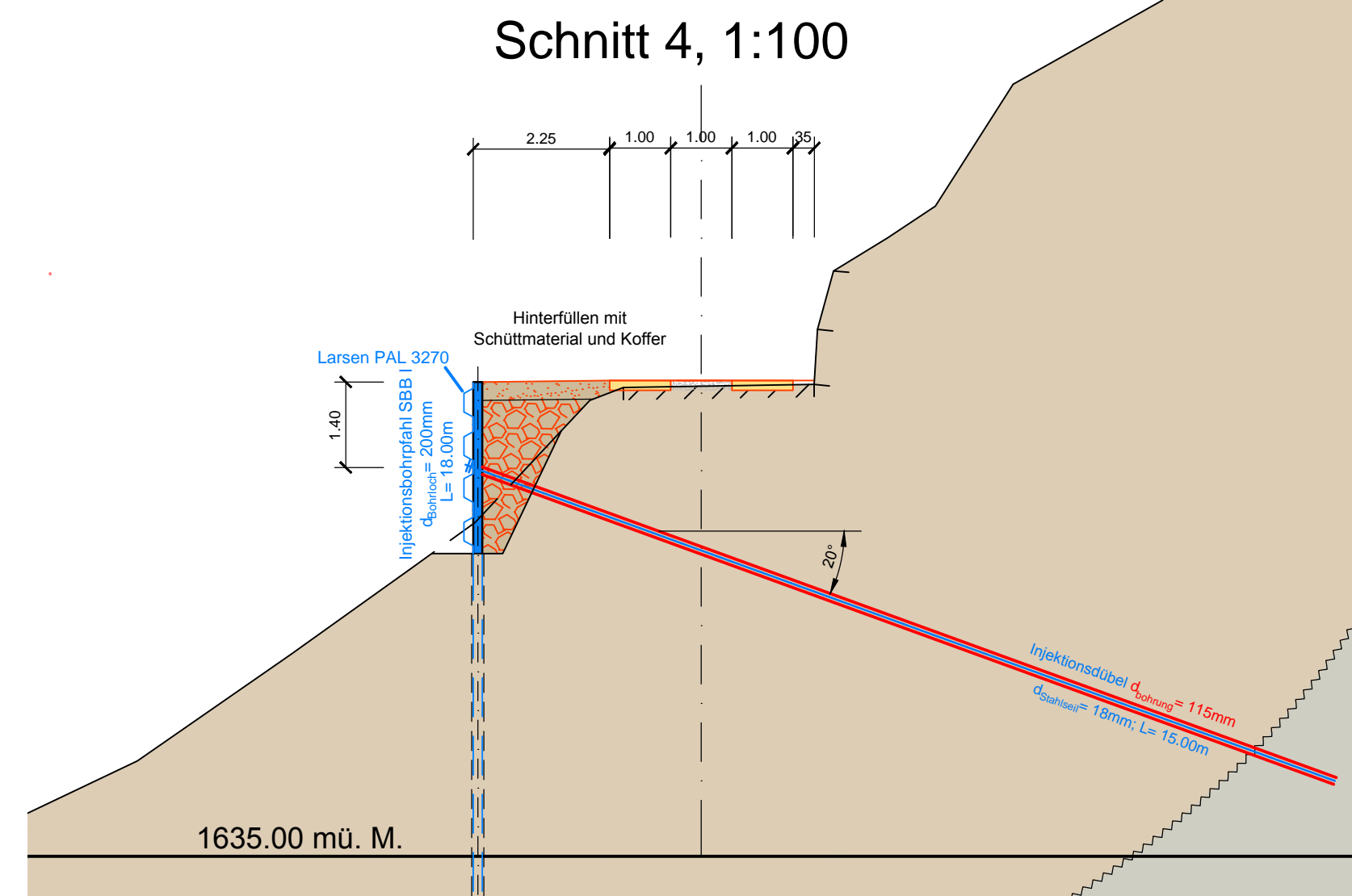
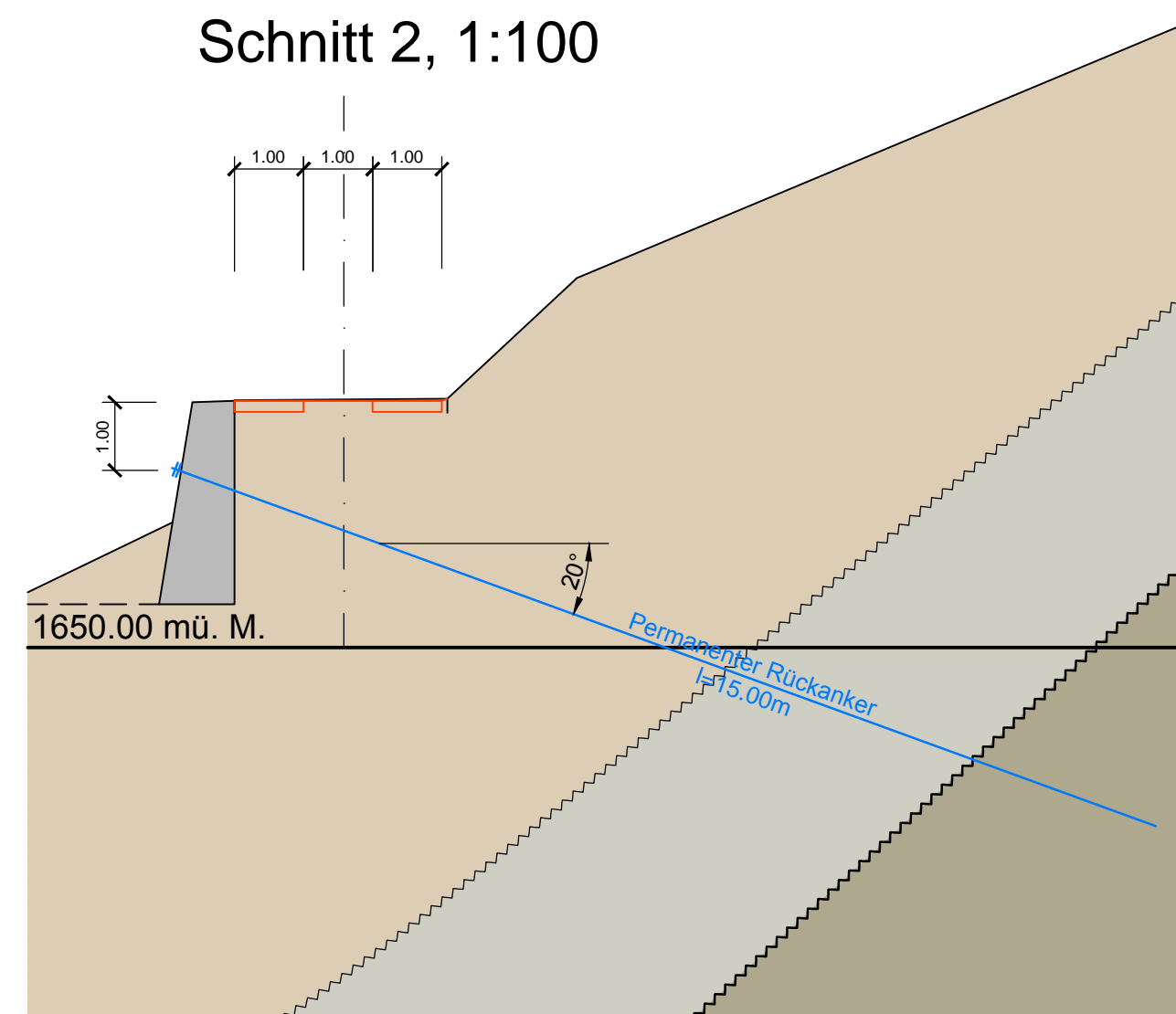
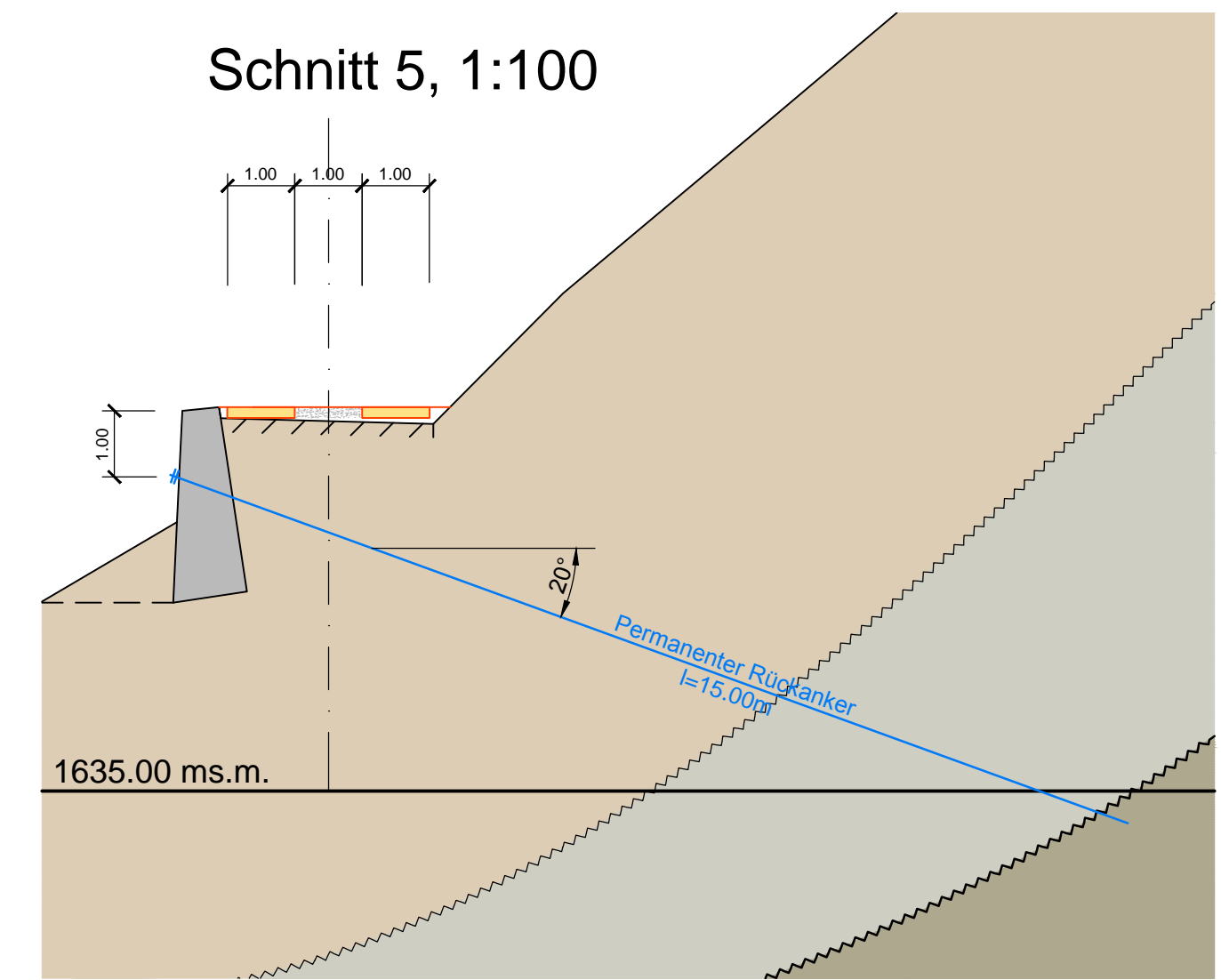
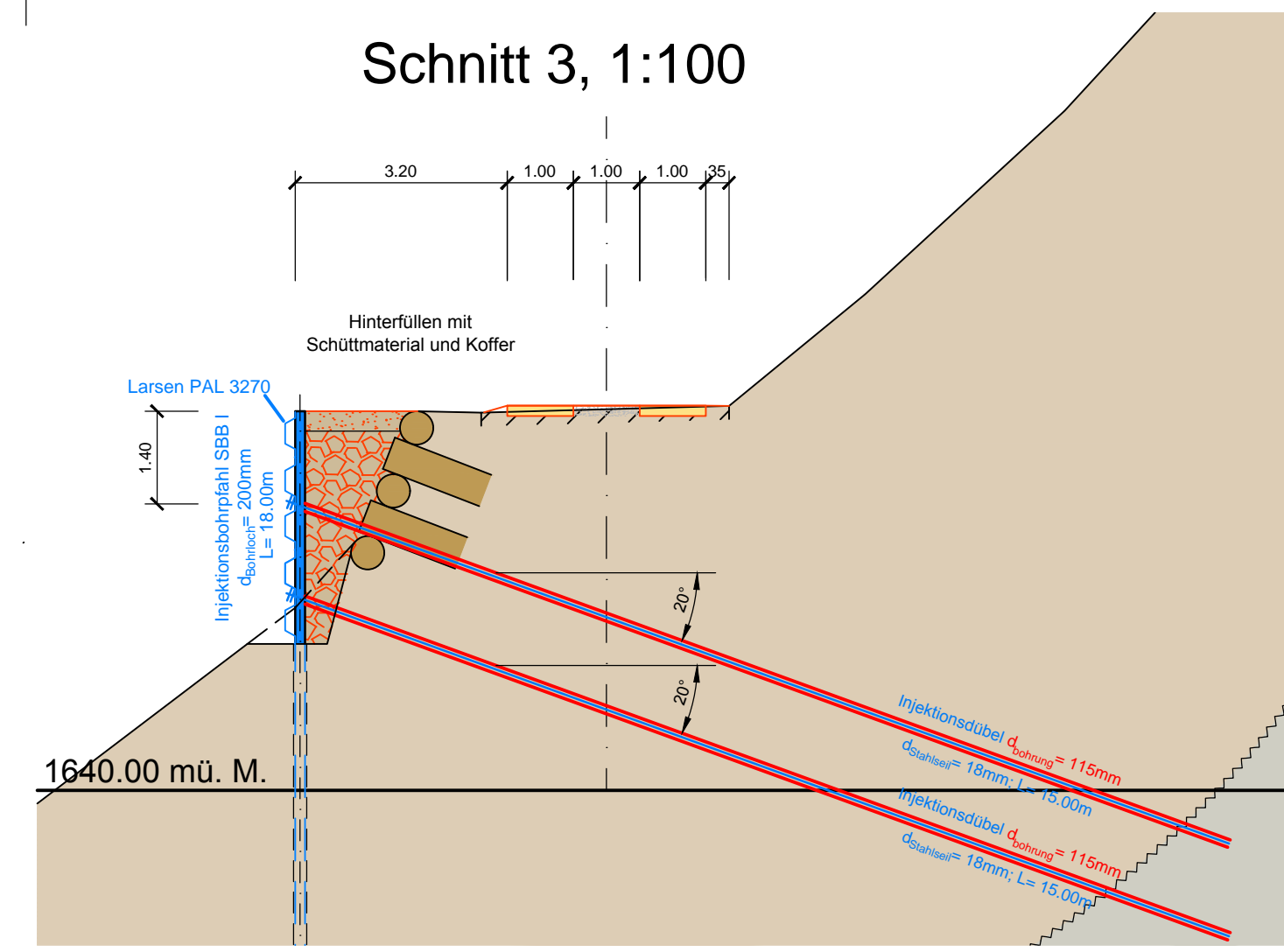
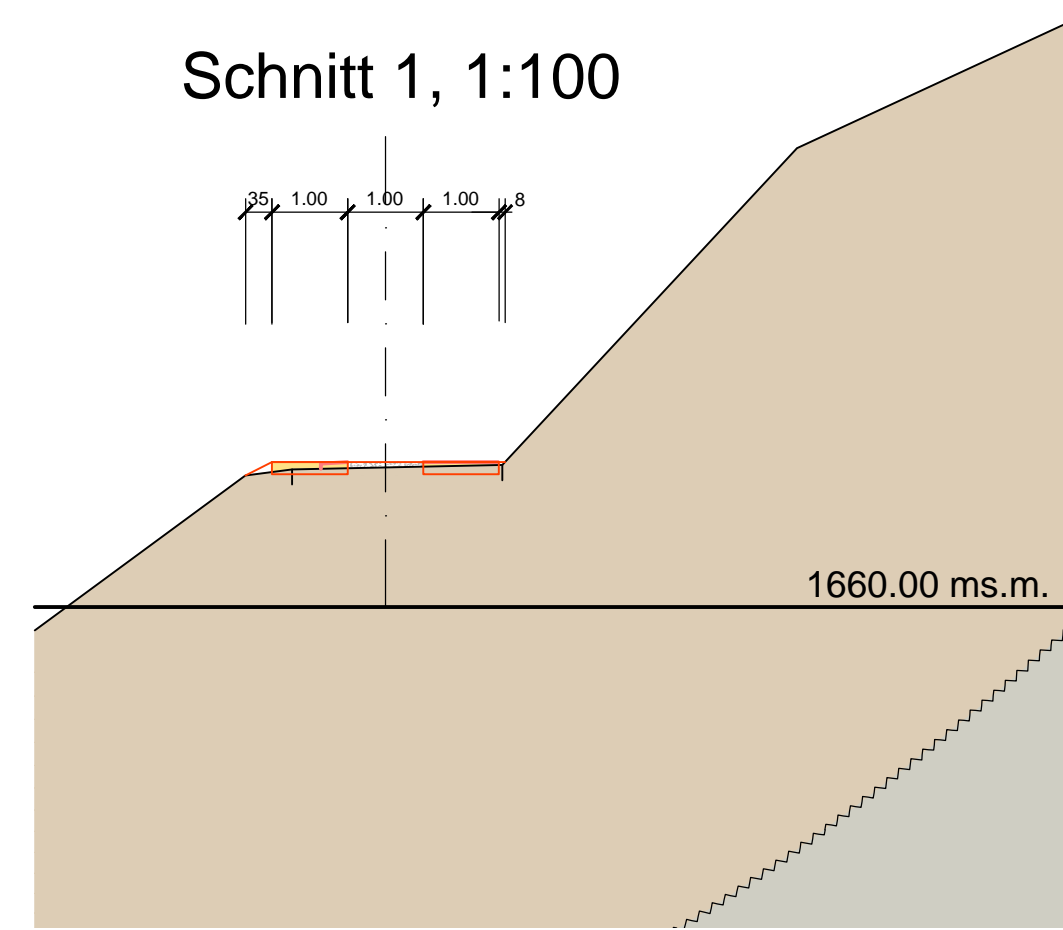
Submissionsprojekt

Situation 1:500 und Schnitte 1:100

PLAN 556-201	DATUM 14.09.2018	FORMAT 60/84	GEZ. DF	KONTR. CC	REV.
DATUM	ÄNDERUNG		INDEX	GEZ.	KONTR.



Caplutta BA 7148 Lumbrin Tel. 081 931 35 31
info@collenberg-ing.ch www.collenberg-ing.ch



LEGENDE:

Gebäude	
Naturbelag	
Betonbelag	
Gefahrenzone	
Betonspuren	
Moräne	
aufgeweichter Fels	
harter Fels	

